

# Ubuntu 10.04

A Summary of the “Lucid Lynx” Release

For Penguins Unbound  
29 May 2010

Presented by Tony Yarusso  
Ubuntu Minnesota Team Contact

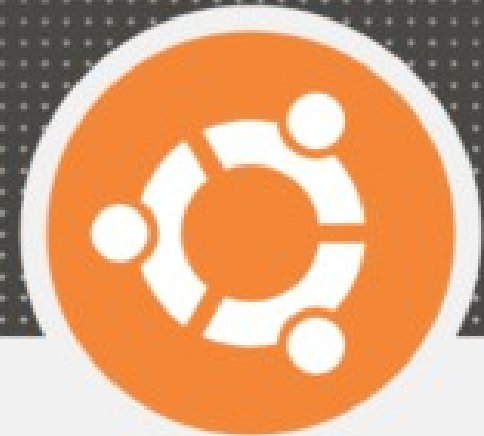
# Overview

- LTS (3 / 5 year)
- More friendly Ubiquity
- Timezone detection
- Linux 2.6.32
- Improved boot speed
- Plymouth
- Lubuntu option maturing
- Nouveau

# Ubiquity

Installing system

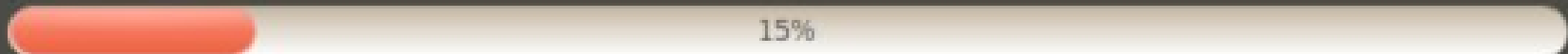
## Welcome



- Thank you for choosing Ubuntu 10.04 LTS.
- This release marks a major milestone in the Ubuntu project. It is easier and more reliable than ever, with hundreds of improvements including a new video editor, integrated social networking and a growing selection of extra software.
- Whether you're new to Ubuntu or a long-time user, we're sure there is something you will enjoy. While Ubuntu is installed, this slideshow will show you around.

**Ubuntu is designed to be easy. Feel free to explore!**

Copying files...



# Timezone Detection

Install

## Where are you?

Select your location, so that the system can use appropriate display conventions for your country, fetch updates from sites close to you, and set the clock to the correct local time.



Region:  Time Zone:

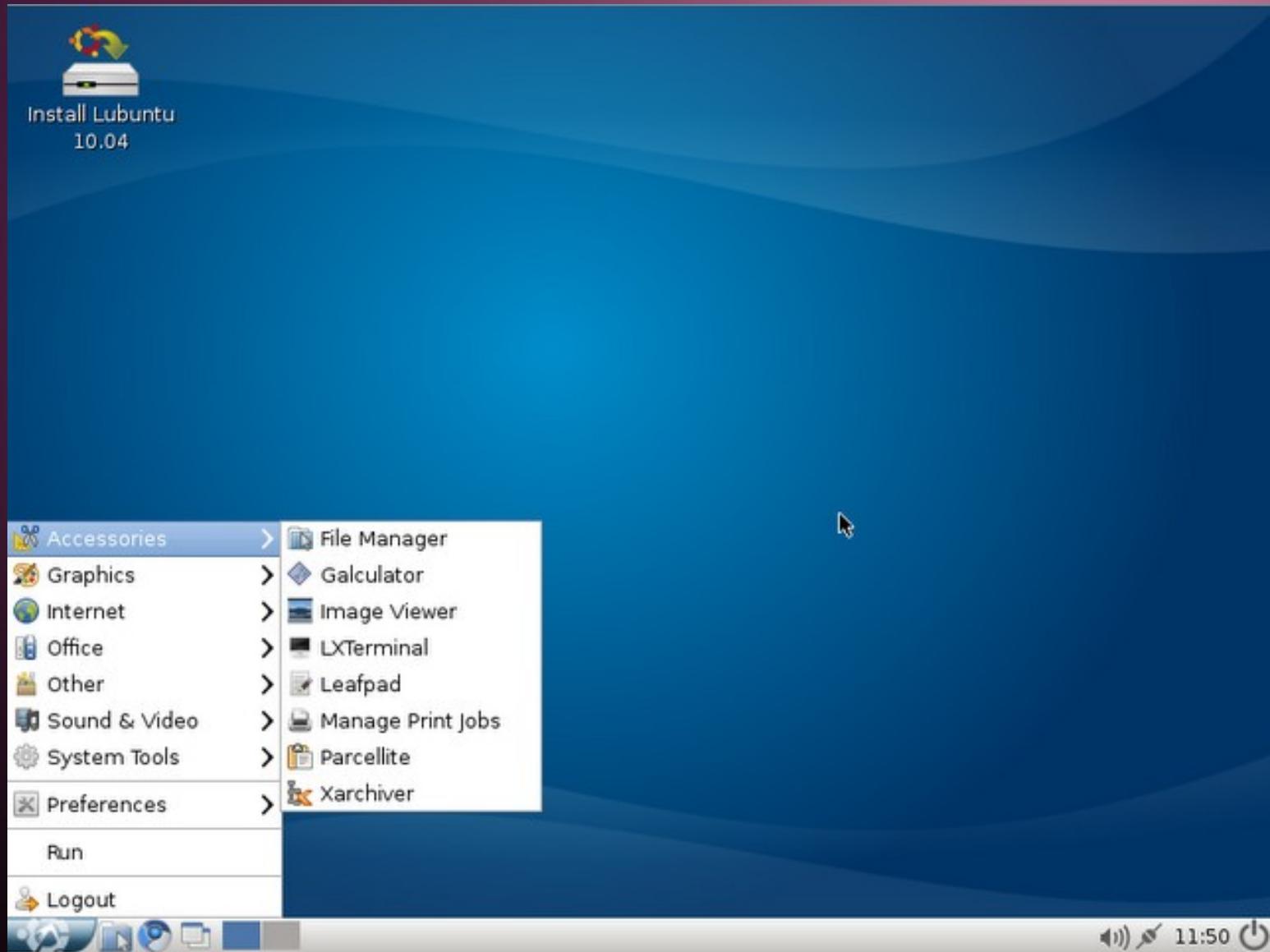
Step 2 of 7

Quit Back Forward

# Plymouth



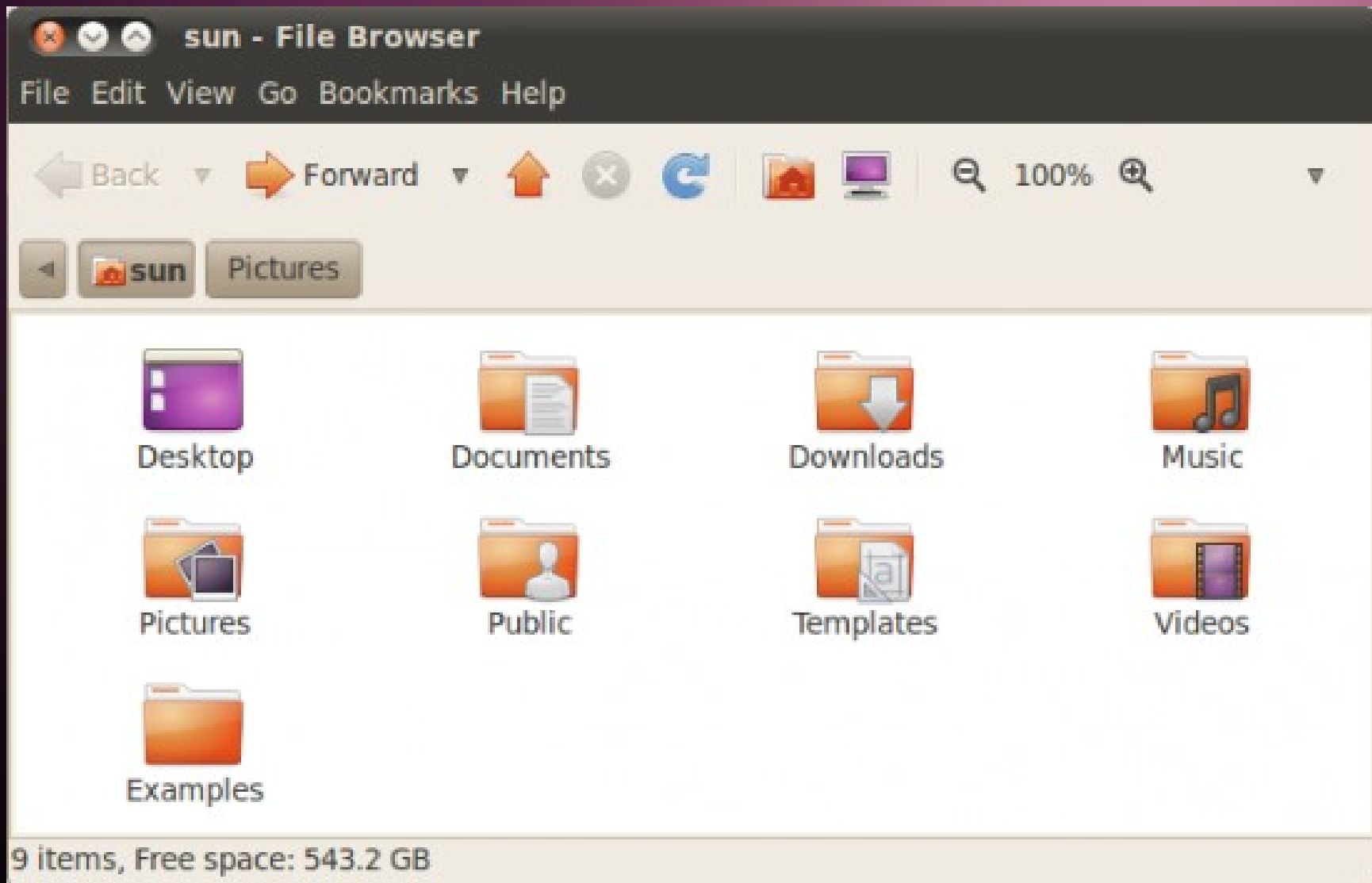
# Lubuntu



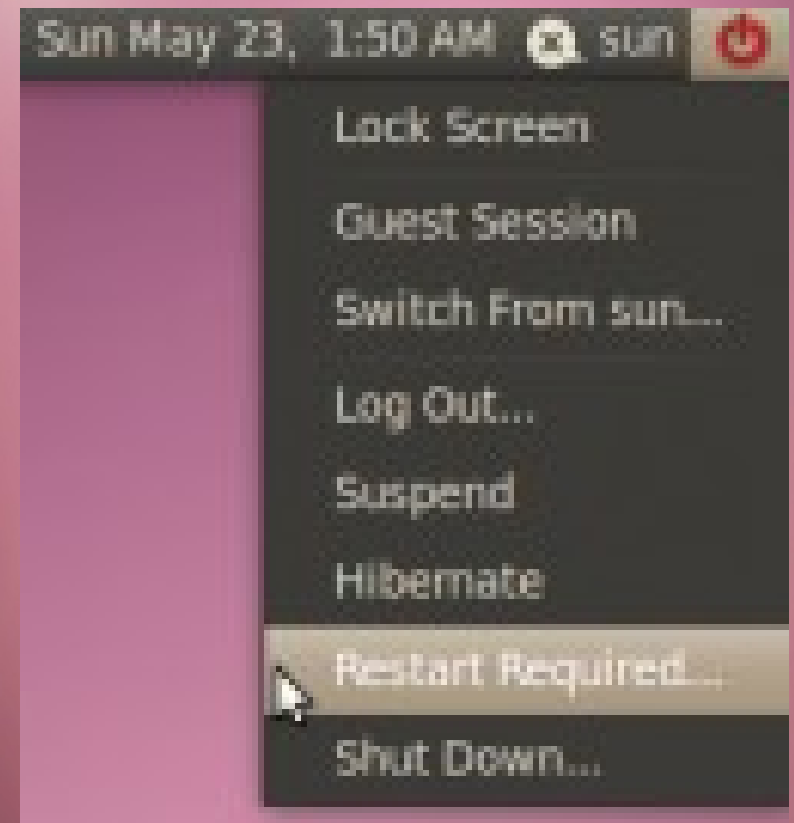
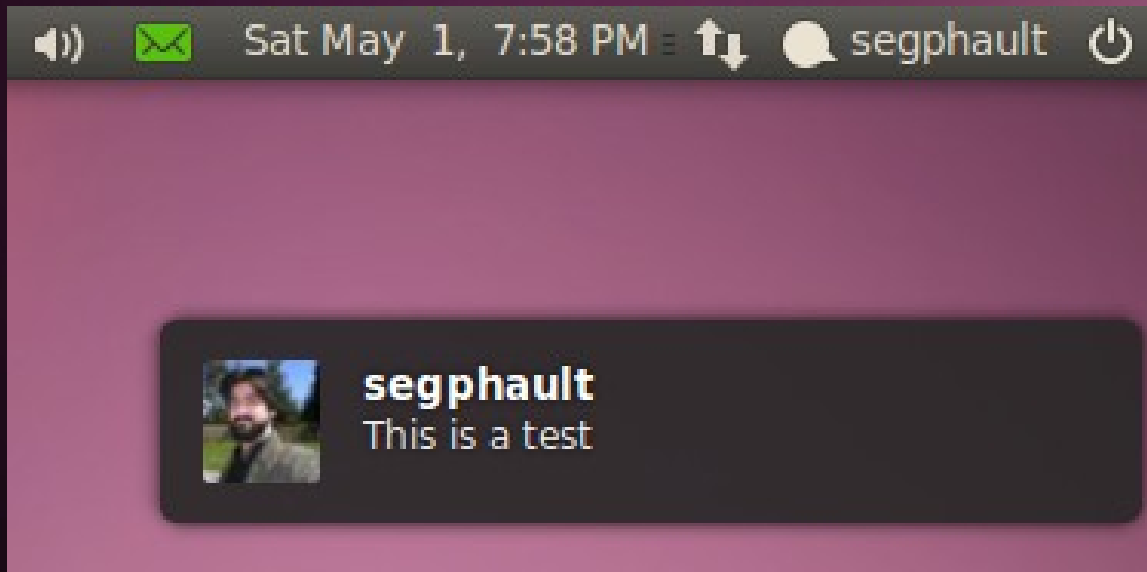
# Desktop Experience

- New themes
  - Purple
  - Color accents
  - Descriptive icons
- Panel changes
  - Indicator applet matures
  - Green messaging indicator
  - Arrow by running apps
  - Restart required indication

# Theme



# Panel & Indicators



# Desktop Experience (cont.)

- Social From the Start
  - Me Menu – direct posting
  - Gwibber
    - Multi-column view
    - Account Target bar
  - Integrated Notifications
- Nautilus improvements
  - Simplified menus
  - Descriptive icons
  - Split-pane view

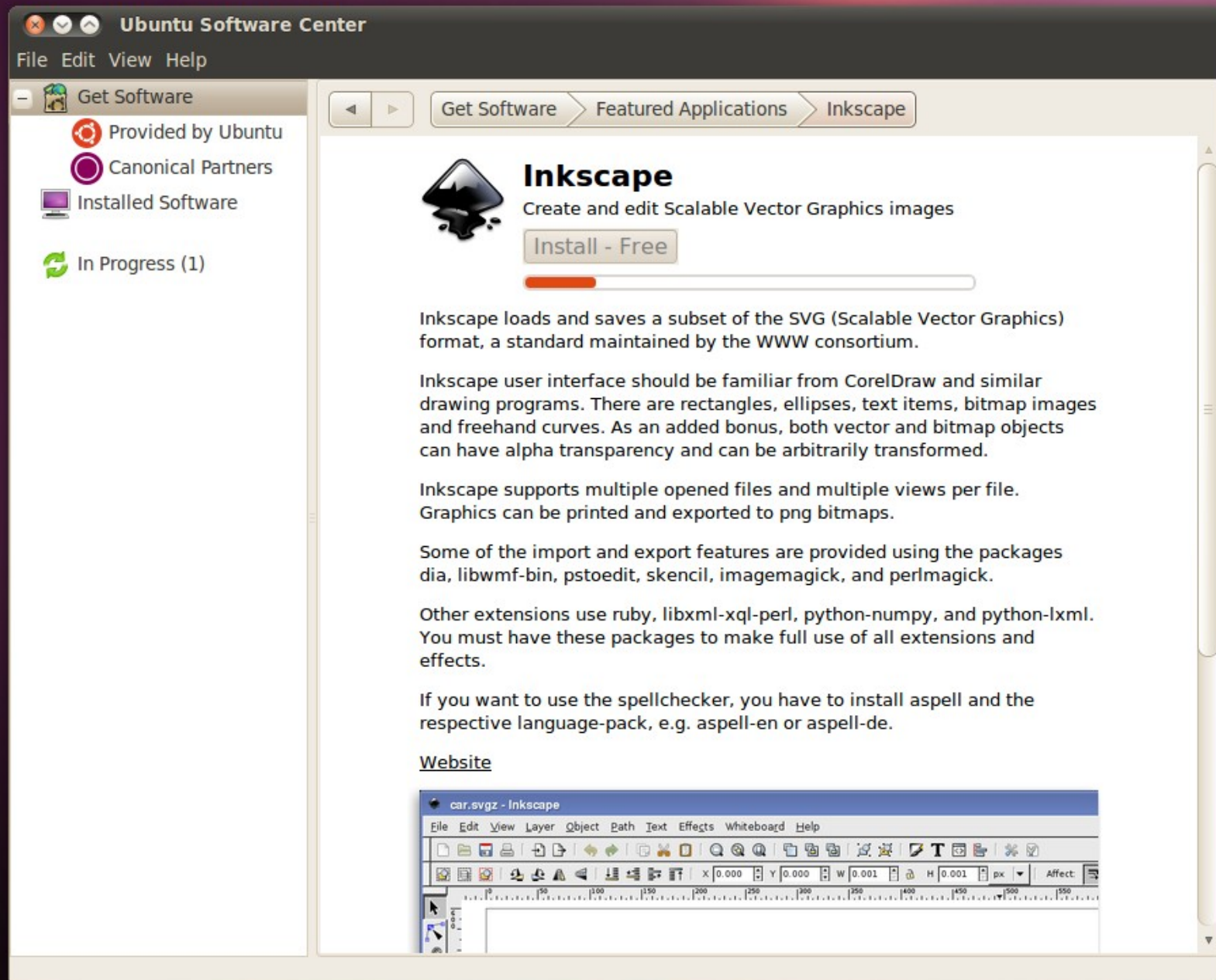
# Desktop Experience (cont.)

- Software Center 2.0
  - Actually usable / likable now
  - More categories
  - Shows software sources
  - Concurrent installations
  - Includes libraries & development tools
  - Built for future – purchase & donations

# Software Center



# Software Center (cont.)



The screenshot shows the Ubuntu Software Center window. The title bar reads "Ubuntu Software Center" and the menu bar includes "File Edit View Help". The left sidebar is titled "Get Software" and contains four categories: "Provided by Ubuntu" (Ubuntu logo), "Canonical Partners" (Ubuntu logo), "Installed Software" (computer icon), and "In Progress (1)" (refresh icon). The main content area has a breadcrumb trail: "Get Software > Featured Applications > Inkscape". Below the breadcrumb is the Inkscape logo and the text "Inkscape Create and edit Scalable Vector Graphics images". A button labeled "Install - Free" is present, with a progress bar below it. The main text describes Inkscape's features and dependencies.

**Inkscape**  
Create and edit Scalable Vector Graphics images

Install - Free

Inkscape loads and saves a subset of the SVG (Scalable Vector Graphics) format, a standard maintained by the WWW consortium.

Inkscape user interface should be familiar from CorelDraw and similar drawing programs. There are rectangles, ellipses, text items, bitmap images and freehand curves. As an added bonus, both vector and bitmap objects can have alpha transparency and can be arbitrarily transformed.

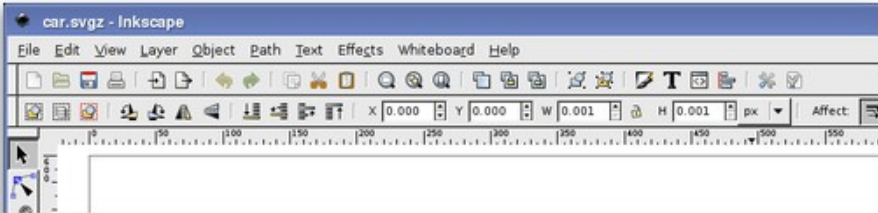
Inkscape supports multiple opened files and multiple views per file. Graphics can be printed and exported to png bitmaps.

Some of the import and export features are provided using the packages dia, libwmf-bin, pstoeedit, skencil, imagemagick, and perlmagick.

Other extensions use ruby, libxml-xql-perl, python-numpy, and python-lxml. You must have these packages to make full use of all extensions and effects.

If you want to use the spellchecker, you have to install aspell and the respective language-pack, e.g. aspell-en or aspell-de.

[Website](#)

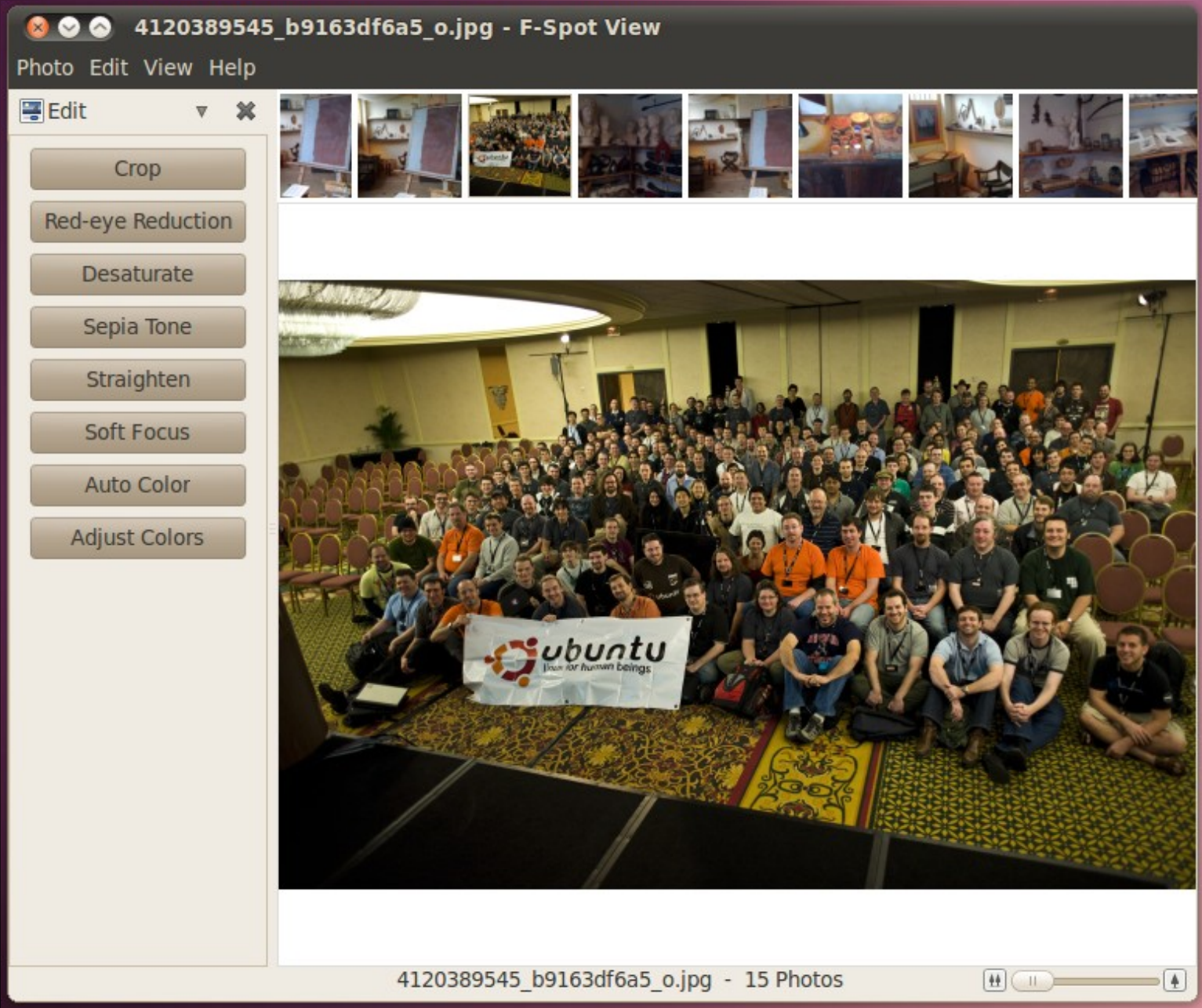


The thumbnail shows the Inkscape application window titled "car.svgz - Inkscape". The menu bar includes "File Edit View Layer Object Path Text Effects Whiteboard Help". The toolbar contains various drawing tools. The status bar shows coordinates (X: 0.000, Y: 0.000), dimensions (W: 0.001, H: 0.001), and units (px). The main canvas displays a drawing of a car.

# Desktop Applications

- Ubuntu One
  - 2GB Free, 50GB for \$10/mo
  - Ubuntu Music Store
- F-Spot improved, GIMP dropped
  - Simple editing functionality
- PiTiVi included
- Simple Scan
- Empathy & Evolution improved

# F-Spot



# Server Experience

- Direct LTS upgrade path from 8.04
- Expanded AppArmor profiles
- Kernel hardening
- Encrypted Home and Private directories
- Turnkey mail server
- Maturing of UEC
- Uncomplicated Firewall extended
- RAID supported in installer

# Server Applications

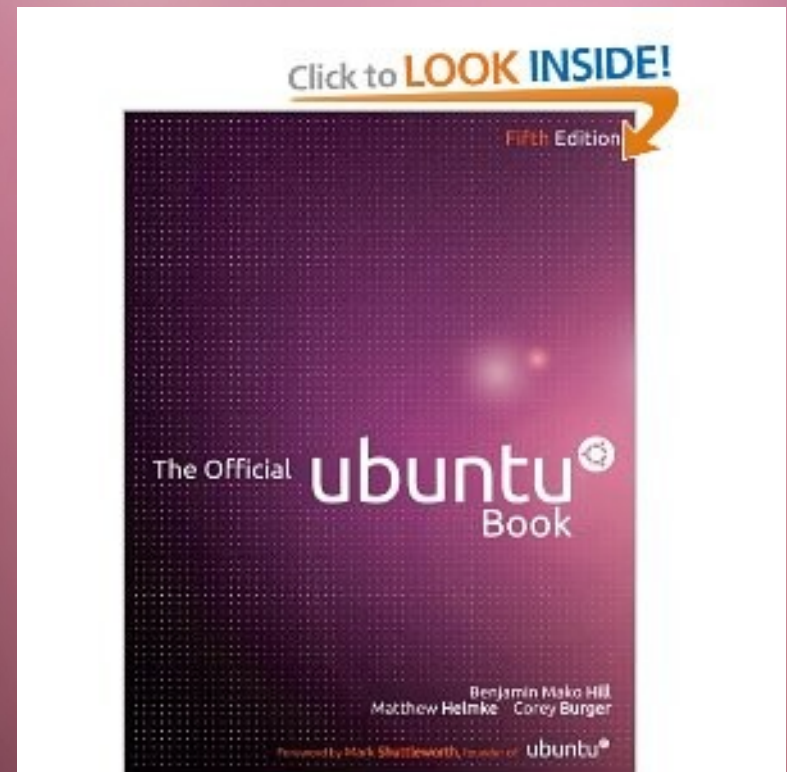
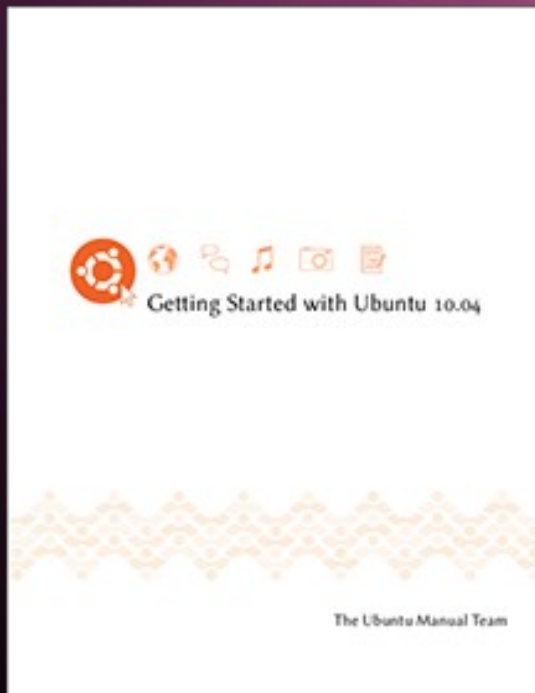
- Apache 2.2
- MySQL 5.1
- PHP 5.3
- Samba 3.4
- Likewise-Open 4.5
- Nagios 3
- KVM 84 / Libvirt 0.7.5

# Virtualization & Cloud

- KVM
  - Memory aggregation
  - Live migration
  - VMBuilder
- UEC / AEC2
  - Puppet integration for management
  - Elastic Block Storage support
  - Package mirroring

# Print Documentation

- Ubuntu Manual
  - [ubuntu-manual.org](http://ubuntu-manual.org)
- Official Ubuntu Book, Fifth Edition
  - Prentice Hall



Questions?